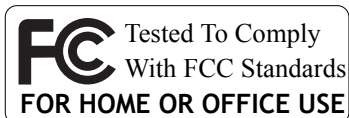


IEEE 802.11b/g

Wireless LAN USB Adapter

QUICK START GUIDE

**VERSION 1.2
2005/01/21**



1

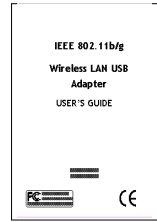
BOX CONTENTS



Wireless LAN Adapter



Driver CD



Quick Start Guide

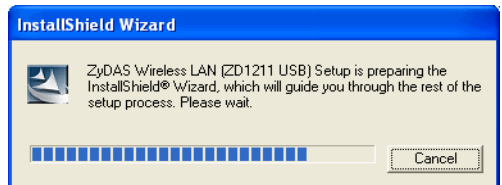
2

INSTALL DRIVER / UTILITY

The installation & driver CD will automatically activate the autorun installation program after you insert the disk into your CD drive.

Step 1 :

Insert the installation & driver DC into your CD-ROM.



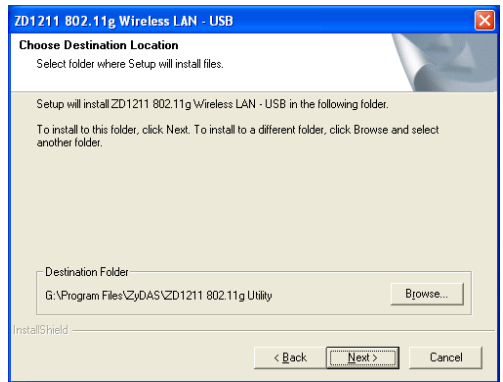
Step 2 :

Click **Next** to continue.



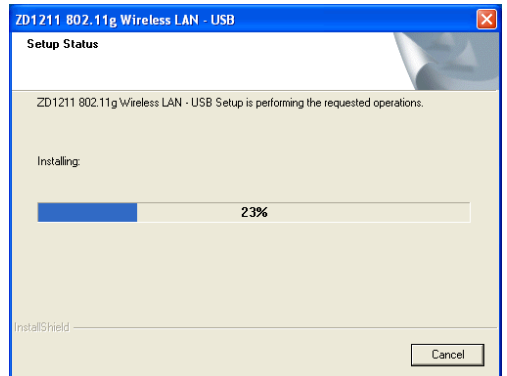
Step 3 :

Click **Next** to install at the designated folder. Or, click “Browse” to select different folder.



Step 4 :

Start copying files until it finish the installation.



Step 5 :

Click **Finish** to complete installation.

Step 6 :

After finished install driver and utility on your system, plug the USB adapter into the USB port of your PC. Windows XP/2000 will automatically detect the USB Adapter.

