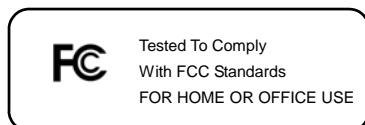


IEEE 802.11n/b/g

Wireless LAN Adapter  
**QUICK START GUIDE**

Version 1.0



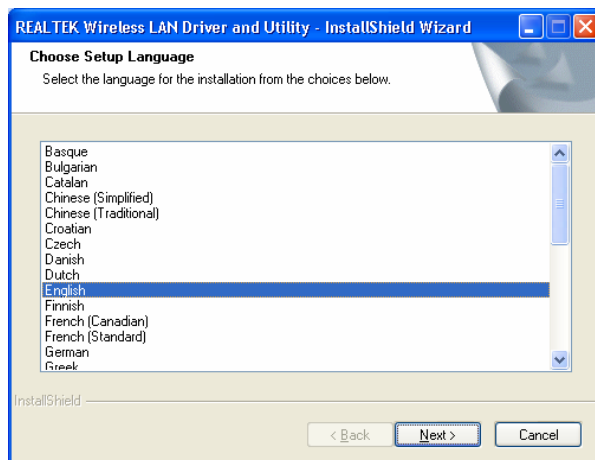
## 1. BOX CONTENTS

- ◆ Wireless LAN Adapter
- ◆ Quick Start Guide
- ◆ Driver CD

## 2. INSTALL DRIVER/UTILITY XP/2K

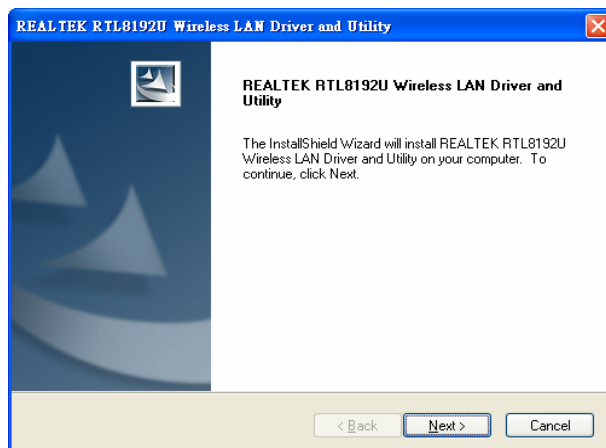
### Step 1 :

Insert the installation CD into your CD-ROM. Choose the Setup Language and click **Next** button.

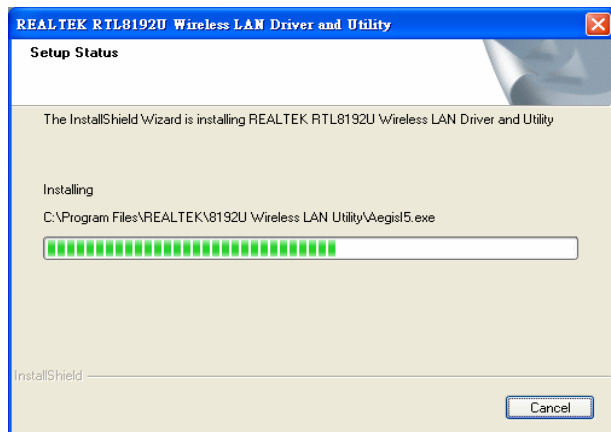


### Step 2 :

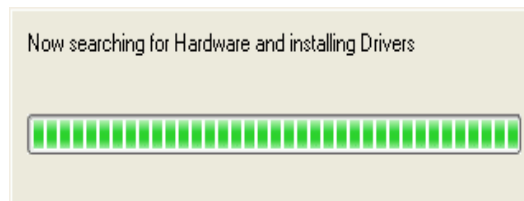
Installation descriptions shown. Click **Next** to continue.



## Installing & configuring wlan utility

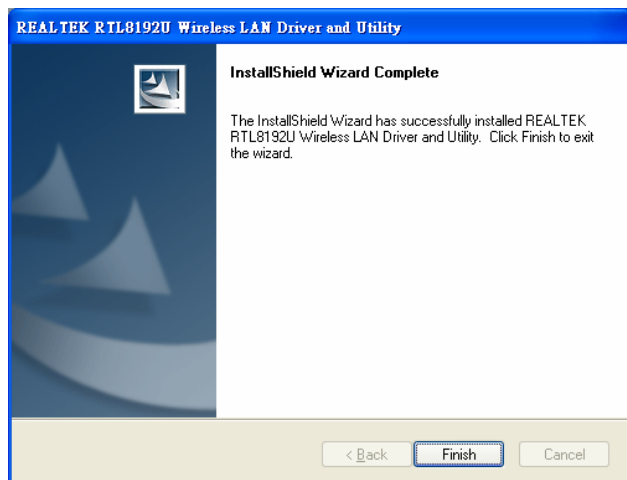


## Installing Drivers.



### Step 3 :

Click **Finish** to complete installation



## 3. Vista DRIVER

Just insert device into proper interface. Vista will install driver automatically. CD also contains the latest driver from chipset vendor.