

Quick Installation Guide of WLAN Broadband Router

※ To avoid users without access right through your WLAN Broadband Router, suggest that use security mechanism like WEP, WPA or set ID/password for web configuration login IP address 192.168.1.254.

Preparation

- 1 At least one PC with IEEE802.11b/g/n WLAN client installed.
- 2 One straight-through Category 5 Ethernet cable, used to link WAN interface to xDSL or CM for Internet connection.
- 3 WLAN Broadband Router.

Check package contents:

- ✓ WLAN Broadband Router
- ✓ DC Power Adapter
- ✓ User's manual CD-ROM
- ✓ RJ-45 Cable Line (Option)

Collect Installation Information:

WAN configuration (Contact your ISP or network administrator for these information)

DHCP Client

Static IP

IP Address	□□□□ . □□□□ . □□□□ . □□□□
Subnet Mask	□□□□ . □□□□ . □□□□ . □□□□
Default Gateway	□□□□ . □□□□ . □□□□ . □□□□
DNS Address	□□□□ . □□□□ . □□□□ . □□□□

PPPoE

User Name	
Password	

PPTP

IP Address	□□□□ . □□□□ . □□□□ . □□□□
Subnet Mask	□□□□ . □□□□ . □□□□ . □□□□
Server IP Address	□□□□ . □□□□ . □□□□ . □□□□
User Name	
Password	

Quick Installation Guide of WLAN Broadband Router

LAN configuration

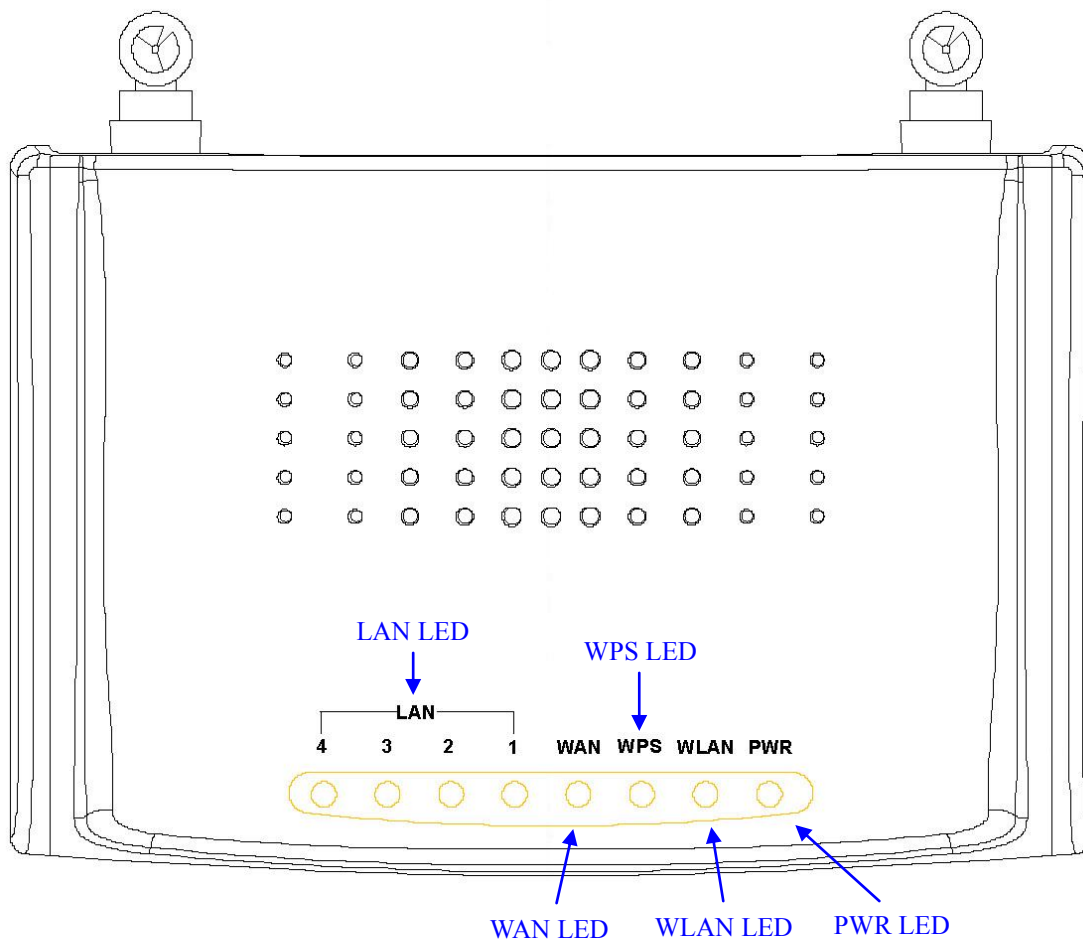
IP Address	<input type="text"/> . <input type="text"/> . <input type="text"/> . <input type="text"/>
Subnet Mask	<input type="text"/> . <input type="text"/> . <input type="text"/> . <input type="text"/>

WLAN configuration

SSID	<input type="text"/>
Mode	<input type="text"/>
Channel Number	<input type="text"/>

Parts and Functions of WLAN Broadband Router:

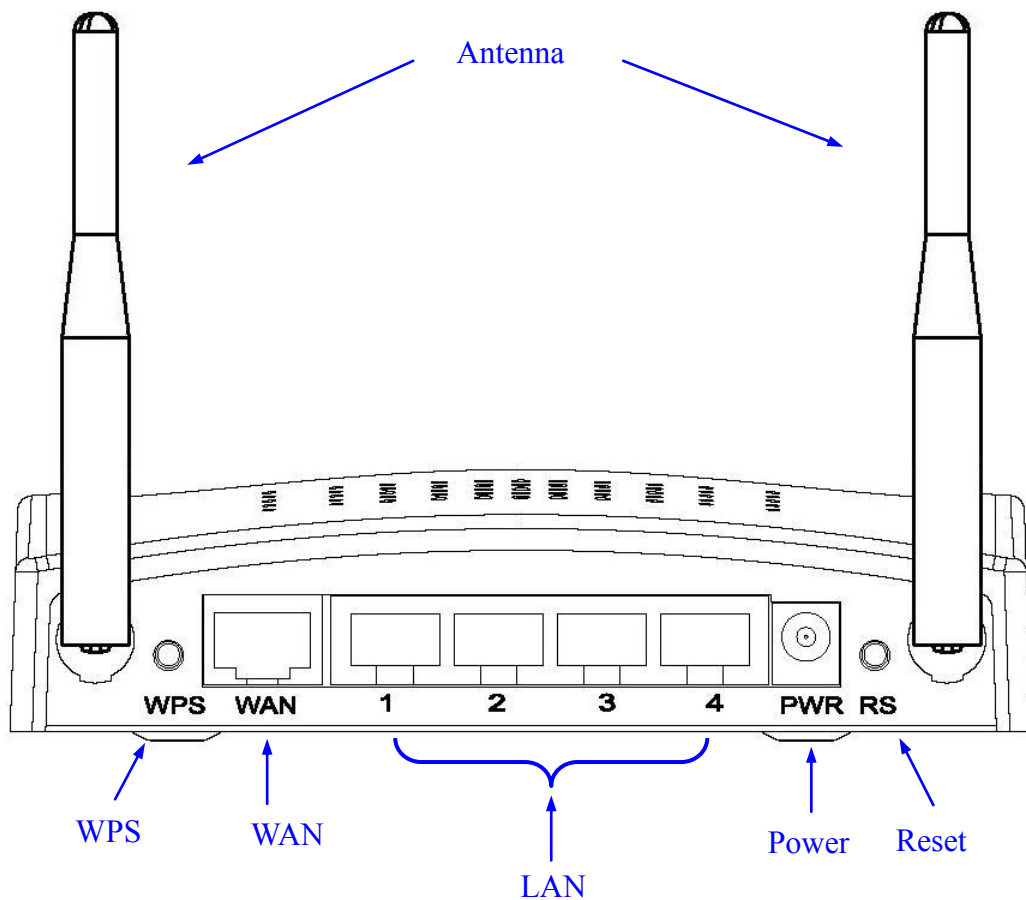
Panel Description (2Tx2R)



Quick Installation Guide of WLAN Broadband Router

LED Indicator	State	Description
1. Power LED	On	The WLAN Broadband Router is powered on.
	Off	The WLAN Broadband Router is powered off.
2. WLAN LED	Flashing	Data is transmitting or receiving on the antenna.
	Off	No data is transmitting or receiving on the antenna.
3. WPS LED	On	The WPS feature is Enabled.
	Off	The WPS feature is Disabled.
4. WAN LED ACT	Flashing	Data is transmitting or receiving on the WAN interface
	On	Port linked.
	Off	No link.
5. LAN LED ACT	Flashing	Data is transmitting or receiving on the LAN interface.
	On	Port linked.
	Off	No link.

Quick Installation Guide of WLAN Broadband Router



Interfaces	Description
Antenna	The Wireless LAN Antenna.
Power	The power jack allows an external DC power supply connection. The external DC adaptor provide adaptive power requirement to the WLAN Broadband Router.
LAN	The RJ-45 sockets allow LAN connection through Category 5 cables. Support auto-sensing on 10/100M speed and half/ full duplex; comply with IEEE 802.3/ 802.3u respectively.
WAN	The RJ-45 socket allows WAN connection through a Category 5 cable. Support auto-sensing on 10/100M speed and half/ full duplex; comply with IEEE 802.3/ 802.3u respectively.
WPS	Push continually the wps button 5 ~ 10 seconds to enable the WPS feature.

Quick Installation Guide of WLAN Broadband Router

Reset	Push continually the reset button 5 ~ 10 seconds to reset the configuration parameters to factory defaults.
-------	---

Installation

Step One – Power On WLAN Broadband Router

Connect DC Power Adapter to WLAN Broadband Router and the wall power socket.

Notice: It will take about 50 seconds to complete the boot up sequence after powered on the WLAN Broadband Router; Power LED will be active, and after that the WLAN Activity LED will be flashing to show the WLAN interface is enabled and working now.

Step Two – Configure WLAN Broadband Router

1. Connect your PC to LAN port for configuration setting

WLAN Broadband Router is delivered with the following factory default parameters on the Ethernet LAN interfaces.

- Default IP Address: **192.168.1.254**
- Default IP subnet mask: **255.255.255.0**
- WEB login User Name: *<empty>*
- WEB login Password: *<empty>*
- Configure your PC with IP address between 192.168.1.1 to 192.168.1.253 and subnet mask to be 255.255.255.0, then open an Internet browser (i.e. Microsoft IE6.1 SP1 or above) to connect WLAN Broadband Router by entering <http://192.168.1.254> to URL field.

Quick Installation Guide of WLAN Broadband Router

WLAN Broadband Router

Access Point Status

This page shows the current status and some basic settings of the device.

System	
Uptime	0day:0h:7m:00s
FirmwareVersion	v1.2.1
BuildTime	Wed Jan 30 06:51:10 CST 2008

WirelessConfiguration	
Mode	AP+WDS
Band	2.4GHz(B+G+N)
SSID	w11n
ChannelNumber	6
Encryption	WEP64bits(AP), Disabled(WDS)
BSSID	00:02:72:86:51:01
AssociatedClients	0

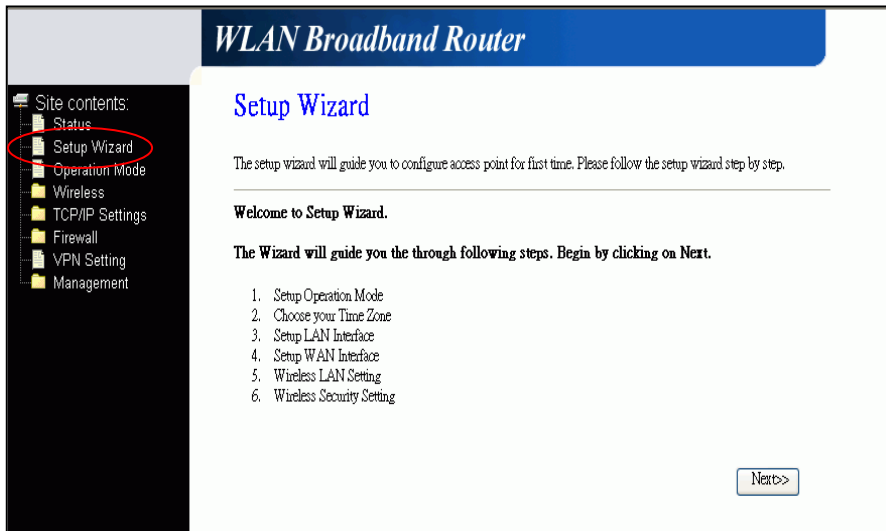
TCP/IPConfiguration	
Attain IP Protocol	FixedIP
IPAddress	192.168.1.254
SubnetMask	255.255.255.0
DefaultGateway	0.0.0.0
DHCP Server	Disabld
MACAddress	00:02:72:86:51:01

WANConfiguration	
Attain IP Protocol	FixedIP
IPAddress	172.1.1.1
SubnetMask	255.255.255.0
DefaultGateway	172.1.1.254
MACAddress	00:02:72:86:51:02

Quick Installation Guide of WLAN Broadband Router

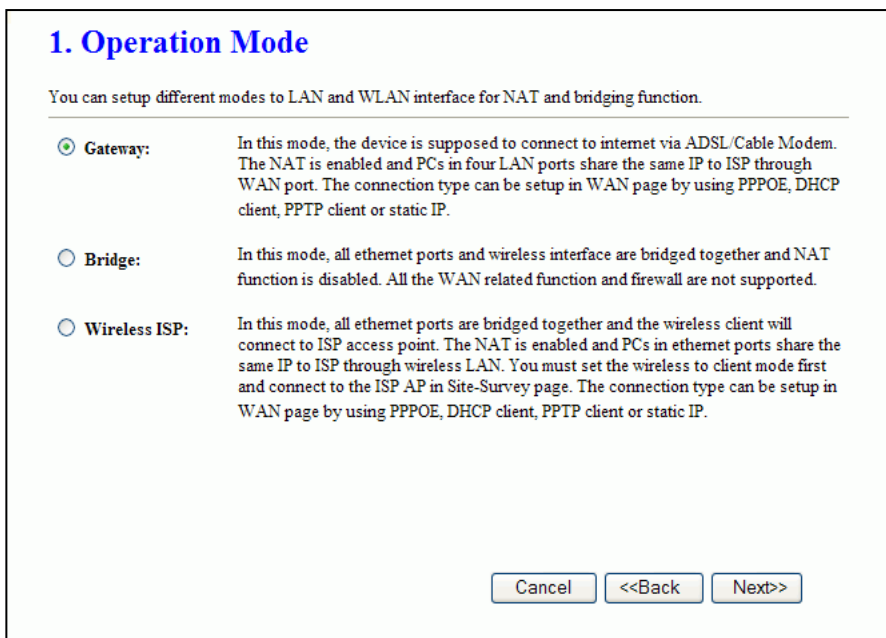
The following example is to configure router as “Gateway” mode that use factory default value. You may change those values if you think that is necessary.

2. Click “Setup Wizard” in submenu of Site contents



- Click “Next>>” button to go next.

3. Configure Operation Mode



- Click “Gateway”.
- Click “Next>>” button to go next.

Quick Installation Guide of WLAN Broadband Router

4. Configure Time Zone Setting configuration

2. Time Zone Setting

You can maintain the system time by synchronizing with a public time server over the Internet.

Enable NTP client update
 Automatically Adjust Daylight Saving

Time Zone Select : (GMT+08:00)Taipei

NTP server : 192.5.41.41 - North America

Cancel <<Back Next>>

- Click “Next>>” button to go next.

5. Configure LAN Interface Setup

3. LAN Interface Setup

This page is used to configure the parameters for local area network which connects to the LAN port of your Access Point. Here you may change the setting for IP address, subnet mask, DHCP, etc..

IP Address: 192.168.1.254

Subnet Mask: 255.255.255.0

Cancel <<Back Next>>

- IP Address:
192.168.1.254.
- Subnet Mask:
255.255.255.0.
- Click “Next>>” button to go next.

6. WAN Interface Setup

4. WAN Interface Setup

This page is used to configure the parameters for Internet network which connects to the WAN port of your Access Point. Here you may change the access method to static IP, DHCP, PPPoE or PPTP by click the item value of WAN Access type.

WAN Access Type: DHCP Client

Cancel <<Back Next>>

- WAN Access Type: Select WAN connection of ISP provides.
- ◇ WAN Options:
Static IP, DHCP Client, PPPoE, PPTP
- Click “Next>>” button to go next.

Quick Installation Guide of WLAN Broadband Router

7. Wireless Basic Settings

5. Wireless Basic Settings

This page is used to configure the parameters for wireless LAN clients which may connect to your Access Point.

Band: 2.4 GHz (B+G+N)

Mode: AP

Network Type: Infrastructure

SSID: MyWLAN

Channel Width: 40MHz

ControlSideband: Upper

Channel Number: 11

Enable Mac Clone (Single Ethernet Client)

- Band: 2.4GHz(B+G)
- Mode: AP
- Network Type: disabled
- SSID: MyWLAN
- Channel: 11
- Enable Mac Clone: disabled
- Click “Next>>” button to go next.

8. Wireless Security Setup

6. Wireless Security Setup

This page allows you setup the wireless security. Turn on WEP or WPA by using Encryption Keys could prevent any unauthorized access to your wireless network.

Encryption: WEP

Key Length: 64-bit

Key Format: Hex (10 characters)

Key Setting: *****

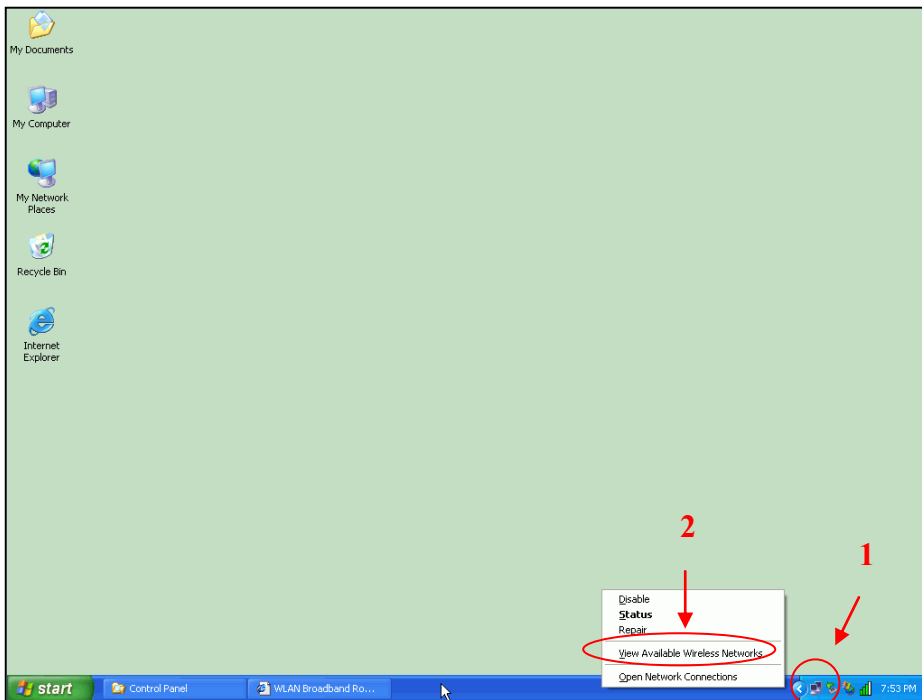
- Encryption: None
- ◇ Options:
 - WEP, WPA (TKIP), WPA2 (AES), WPA2 Mixed
- Click “Finished” button to close setup session.

Quick Installation Guide of WLAN Broadband Router

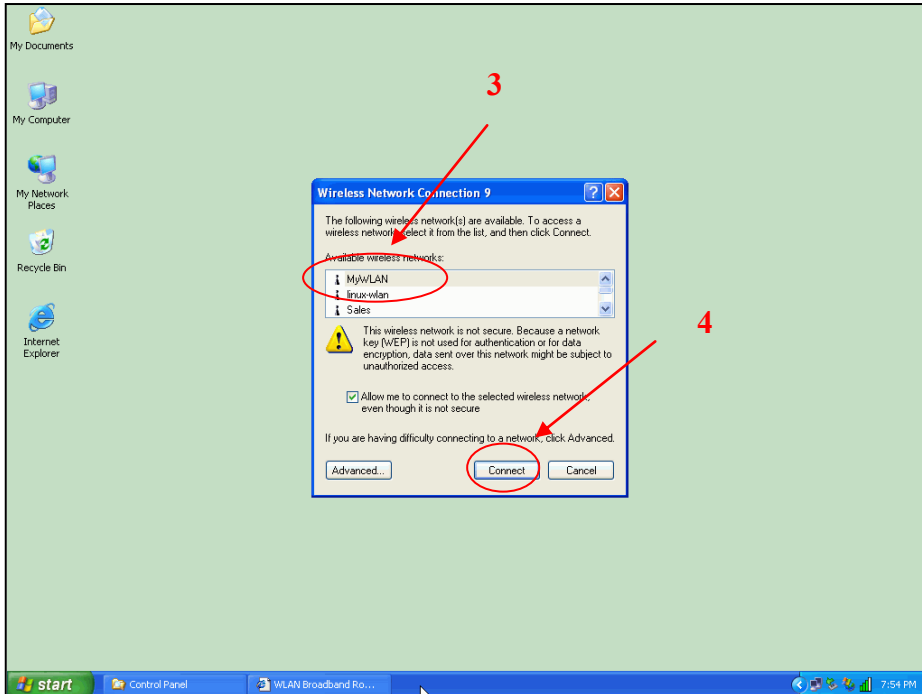
Step Three – Connect WLAN client to WLAN Broadband Router wirelessly

On your wireless client PC:

1. Move your mouse to the Network icon on the Task bar and right click the mouse button to bring up the pop-up menu.
2. Click the View Available Wireless Networks on the pop-up menu.

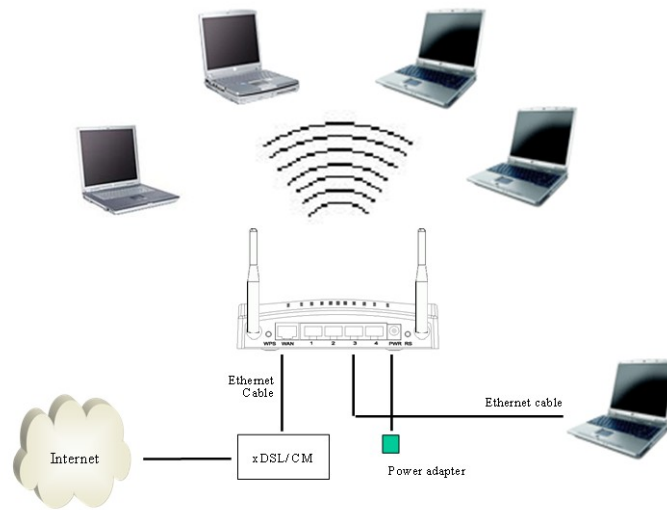


3. Select the specific WLAN network (SSID) from the Available Networks list.



4. Click the Connect button to establish the communication link to the wireless network

Quick Installation Guide of WLAN Broadband Router



The wireless network diagram of WLAN Broadband Router..

Reference

Please consult the user's manual of WLAN Broadband Router for detailed and complete operation guide.